



# Deepsea Challenge

Oyster, 50 mm, RLX titanium

**The Oyster Perpetual  
Deepsea Challenge in  
RLX titanium with a  
Cerachrom bezel insert  
in black ceramic and an  
Oyster bracelet.**



CERAMIC BEZEL AND LUMINESCENT DISPLAY

## Legendary divers' watch

The 60-minute graduated, unidirectional rotatable bezel of the Deepsea Challenge enables divers to precisely and safely monitor their dive and decompression times.

It is equipped with a patented black Cerachrom bezel insert manufactured by Rolex in a virtually scratchproof ceramic whose colour is unaffected by ultraviolet rays. The graduation is coated via PVD (Physical Vapour Deposition) with a thin layer of platinum. The dial features large Chromalight hour markers and hands, filled with luminescent

material that emits a long-lasting blue glow for excellent legibility in dark conditions.





INTENSE BLACK DIAL

## For legibility underwater

The dial's luminescent Chromalight display is an innovation that improved visibility in dark environments, an essential feature for divers.

Hour markers in simple shapes – triangles, circles, rectangles – and broad hour and minute hands enable instant and reliable reading to prevent any risk of confusion underwater.



RLX TITANIUM

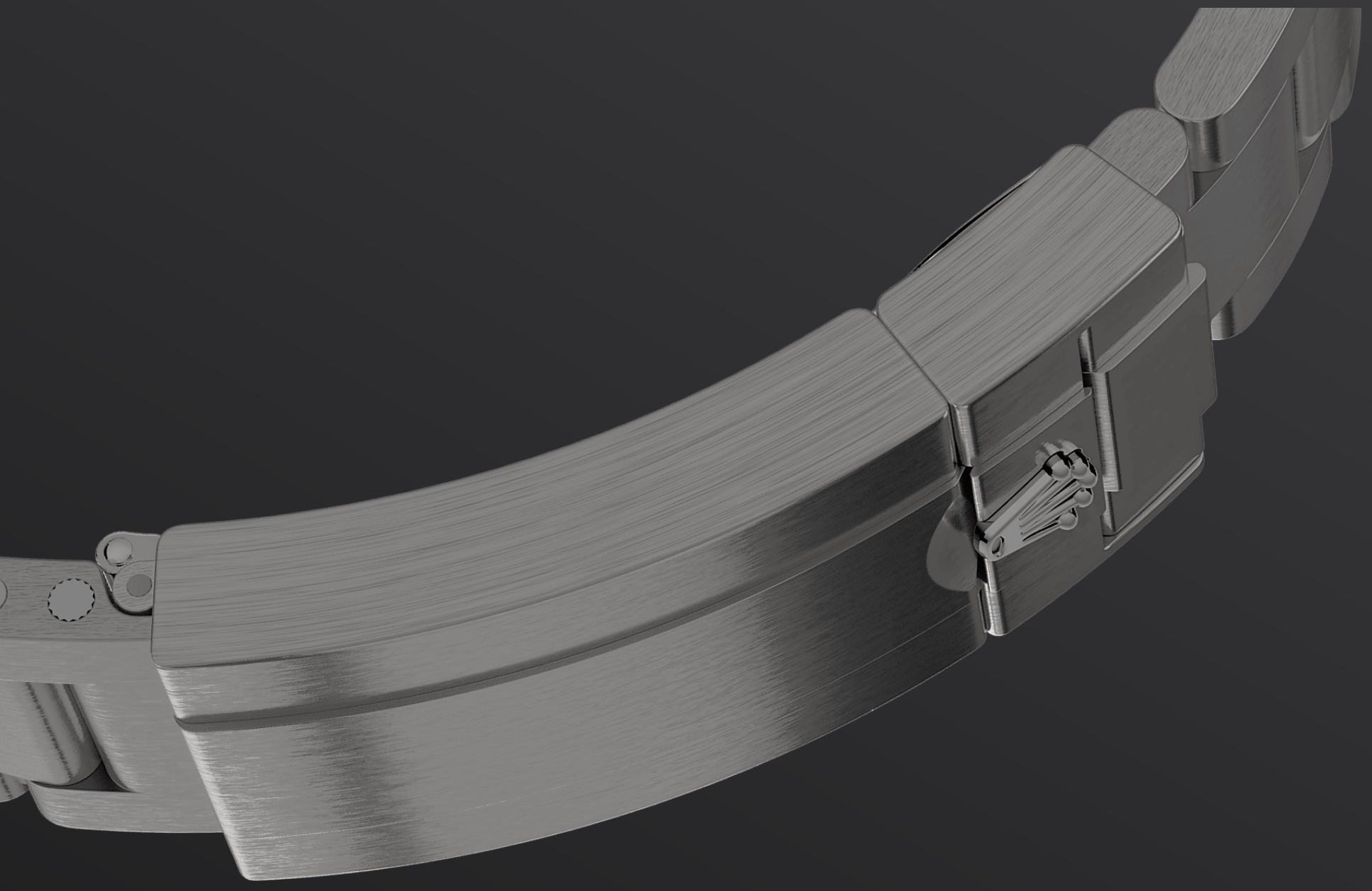
## Ultralight resistance

RLX titanium is a grade 5 titanium alloy selected by Rolex for its weightlessness and resistance to deformation and corrosion. Although insensitive to abyssal pressure, the experimental watch that accompanied James Cameron in the Mariana Trench still posed a wearability problem due to its weight, as it was made of 904L steel.

The use of RLX titanium to create the case and bracelet of the Deepsea Challenge considerably lightened its weight: it is 30 per cent lighter than the experimental watch that inspired it. The watch

also features a particularly visible grain in the satin finish on the bracelet and the case – with the exception of the crown guard. In order to highlight the curved profile of the lugs, the top edges have been chamfered and polished.





THE OYSTER BRACELET

## Alchemy of form and function

The innovative Rolex Glidelock and Fliplock extension systems require no tools for use. Made of RLX titanium, the Deepsea Challenge's Oyster bracelet is equipped with both the Fliplock extension link and the Rolex Glidelock system.

Thanks to the combination of these two extension systems, the watch can be worn comfortably over a diving suit up to 7 mm thick.



# More Deepsea technical details

Reference 126067

## Model Case

---

### Type

Oyster, 50 mm, RLX titanium

### Diameter

50 mm

### Material

RLX titanium

### Bezel

Unidirectional rotatable 60-minute graduated, scratch-resistant Cerachrom insert in ceramic, numerals and graduations coated in platinum

### Oyster Architecture

Monobloc middle case, screw-down case back and winding crown. Rolex Ringlock System case architecture with Helium escape valve

### Winding Crown

Screw-down, Triplock triple waterproofness system

### Crystal

Domed, 9.5 mm-thick scratch-resistant sapphire

### Water Resistance

Waterproof to 11,000 metres / 36,090 feet, helium escape valve

## Movement

---

### Type

Perpetual, mechanical, self-winding

### Precision

-2/+2 sec/day, after casing

### Calibre

3230, Manufacture Rolex

**Oscillator**

Paramagnetic blue Parachrom hairspring. High-performance Paraflex shock absorbers

**Winding**

Bidirectional self-winding via Perpetual rotor

**Power reserve**

Approximately 70 hours

**Functions**

Centre hour, minute and seconds hands. Stop-seconds for precise time setting

## Bracelet

---

**Type**

Oyster, three-piece solid links

**Bracelet Material**

RLX titanium

**Clasp**

Folding Oysterlock safety clasp with Rolex Glidelock extension system.

Fliplock extension link

## Dial

---

**Type**

Intense black

**Details**

Highly legible Chromalight display with long-lasting blue luminescence

## Certification

---

**Type**

Superlative Chronometer (COSC + Rolex certification after casing)

# Explore and discover more on Rolex.com

**All intellectual property rights such as trademarks, service marks, trade names, designs and copyrights are reserved.**

Nothing contained in this website may be reproduced without written permission. Rolex reserves the right at all times to modify the models featured in the present website.

